

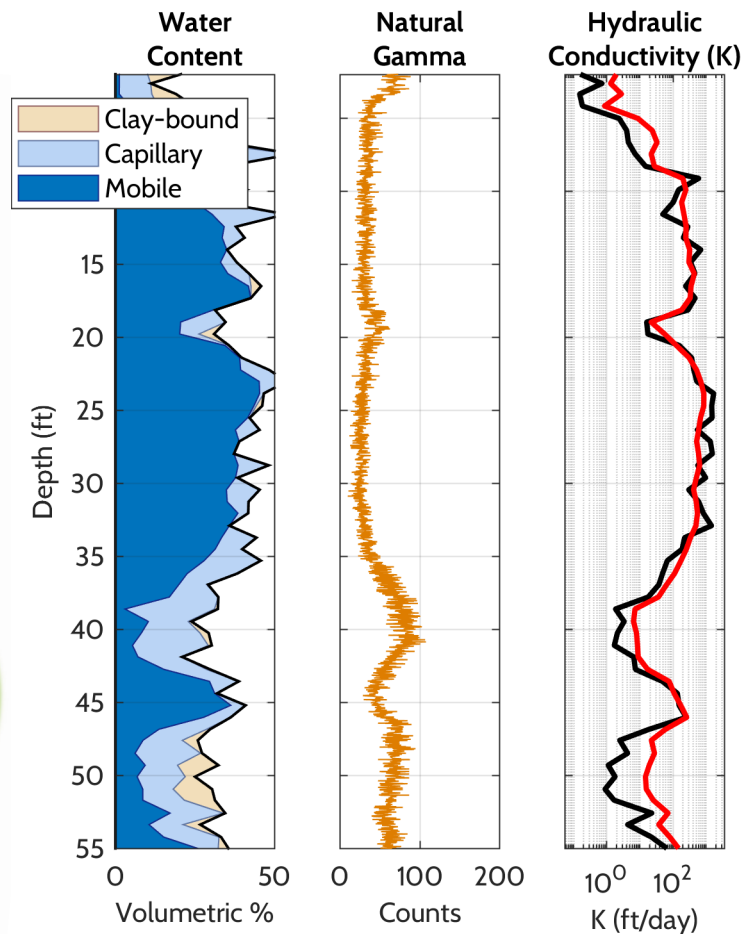
Javelin Wireline Slim

Small-Diameter Magnetic Resonance Wireline Logging Tool

For professional geophysical logging operators

The new Javelin® Wireline Slim provides high-resolution, continuous measurements of principal aquifer properties for groundwater and environmental investigations:

- **Porosity**
 - Bound and mobile water content
 - Pore size distribution
- Hydraulic conductivity
- Natural gamma



Applications

- Geotechnical site investigations
- Groundwater resource management
- Aquifer storage and recovery
- Environmental site characterization
- Mine water engineering
- Brine and leach mining

Javelin® Wireline Slim Magnetic Resonance Logging Tool

FEATURES

Interchangeable Probes

- 2.38in (60mm) and 3.5in (89mm) probes allow operation in a wide range of core holes and groundwater wells
- Integrated field joints for rapid and secure deployment

Widest Diameter of Investigation

- Largest Diameter of Investigation of any small or medium diameter magnetic resonance logging tool
- Measures properties of native formation past the disturbed zone

Multiple Depths of Investigation

- Two independent DOI shells measured during a single logging run allows users to assess radial variability

Ultra-Short Echo Spacing

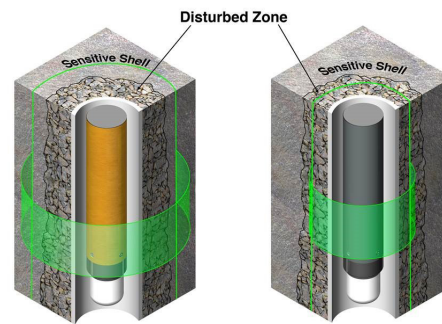
- Echo spacing as short as 450 microseconds ensures accurate measurement of clay-bound water content

Industry-Standard Wireline Compatibility

- Operation on 4-conductor or 7-conductor wireline cable ensures seamless integration with existing logging operations

Flexible Surface Station

- Surface station housing tool power, control, and telemetry electronics operates both the Javelin Wireline Slim and larger Javelin Wireline Max logging systems



Javelin deep-view sensitivity

Unusable data without deep-view



Surface Station is available as a rackmount unit (4U) or housed in a compact, shock-mounted case.



SPECIFICATIONS

Javelin Probes	JPY238	JPY350	Downhole Digital Module
Diameter:	2.38in (60mm)	3.5in (89mm)	Diameter: 2.38in (60mm)
Length:	74in (188cm)	72in (183cm)	Length: 70in (178cm)
Weight:	25lb (11kg)	55lb (25kg)	Weight: 39lb. (18kg)
Pressure Rating:	2350 PSI	1700 PSI	Length w/ Gamma Sensor: 85in (217cm)
Sensitive Diameters:	F ₁ : 9in (23cm) F ₂ : 11in (28cm)	F ₁ : 12in (30cm) F ₂ : 15in (38cm)	Weight w/ Gamma Sensor: 45lb. (20kg)
Vertical Resolution:	9in (25cm)	18in (50cm)	Natural Gamma Sensor: Optional
Echo Spacing:	450µs	600µs	Logging Speed: 100-500 ft/hr
			Cable: 3/16 inch (or larger), 4-core or 7-core

CE Certified. FCC, CTick, CE Emissions Compliant
 Protected by US Patents: US 10,162,026 B2; US 10,302,733 B2; US 8,816,684 B2; US 9,348,054 B2; US 9,588,068 B2.
 JAVELIN is a registered trademark of Vista Clara.

rev 2020-11-01